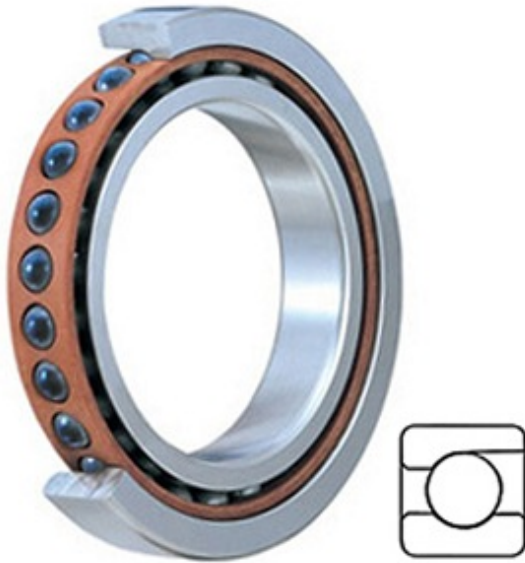




Qinyuan Bearing Manufacturing Co., Ltd.



2MMC9102WI SUL Bearing 2D drawings and 3D CAD models

0.591 Inch | 15 Millimeter x 1.26 Inch | 32 Millimeter x 0.354 Inch | 9 Millimeter TIMKEN 2MMC9102WI SUL Precision Ball Bearings

Bearing No. 2MMC9102WI SUL

Category	Precision Ball Bearings
Inventory	0.0
Manufacturer Name	TIMKEN
Minimum Buy Quantity	N/A
Weight	0.032
EAN	0087796256354
Product Group	B04270
Enclosure	Open
Precision Class	ABEC 7 ISO P4
Material - Ball	Ceramic
Number of Bearings	1 (Single)
Contact Angle	15 Degree
Preload	Light
Raceway Style	1 Rib Outer Ring
Cage Material	Phenolic
Rolling Element	Ball Bearing
Mounting Arrangement	Universal
Flush Ground	Yes
Inch - Metric	Metric
Other Features	Single Row Angular Contact Super High Precision Hybrid Corrosion Resistant Ball
Long Description	15MM Bore; 32MM Outside Diameter; 9MM Width; Open Enclosure;



Qinyuan Bearing Manufacturing Co., Ltd.

	ABEC 7 ISO P4 Precision; Ceramic Ball Material; 1 (Single) Bearings; 15 Degree Contact Angle; Phenolic Cage Material; 1 Rib Outer Ring Ra
Category	Precision Ball Bearings
UNSPSC	31171531
Harmonized Tariff Code	8482.10.50.28
Noun	Bearing
Keyword String	Angular Contact Ball
Manufacturer URL	http://www.timken.com
Manufacturer Item Number	2MMC9102WI SUL
Weight / LBS	0.07
d	0.591 Inch 15 Millimeter
D	1.26 Inch 32 Millimeter
B	0.354 Inch 9 Millimeter